

RETAIL SPACE AVAILABLE AT PARK PLACE IN SEMINOLE



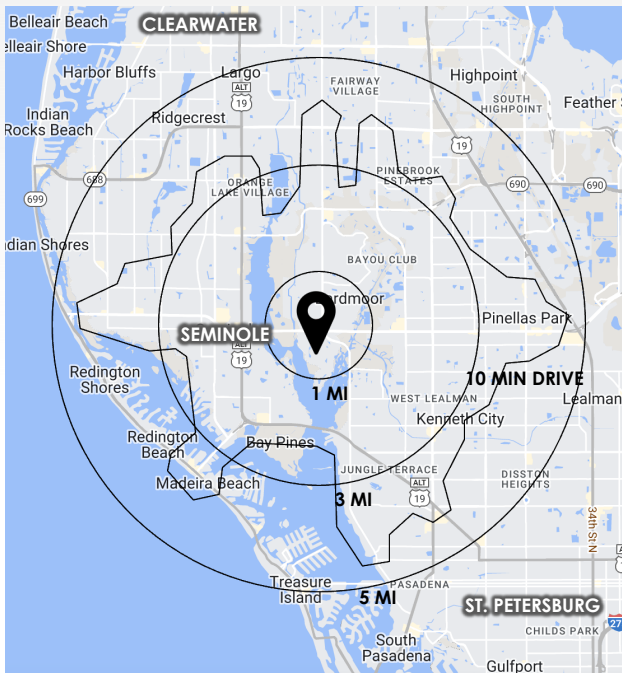
THE PROPERTY

7562-7600 STARKEY ROAD
SEMINOLE, FL 33777

GLA: 52,243 SF

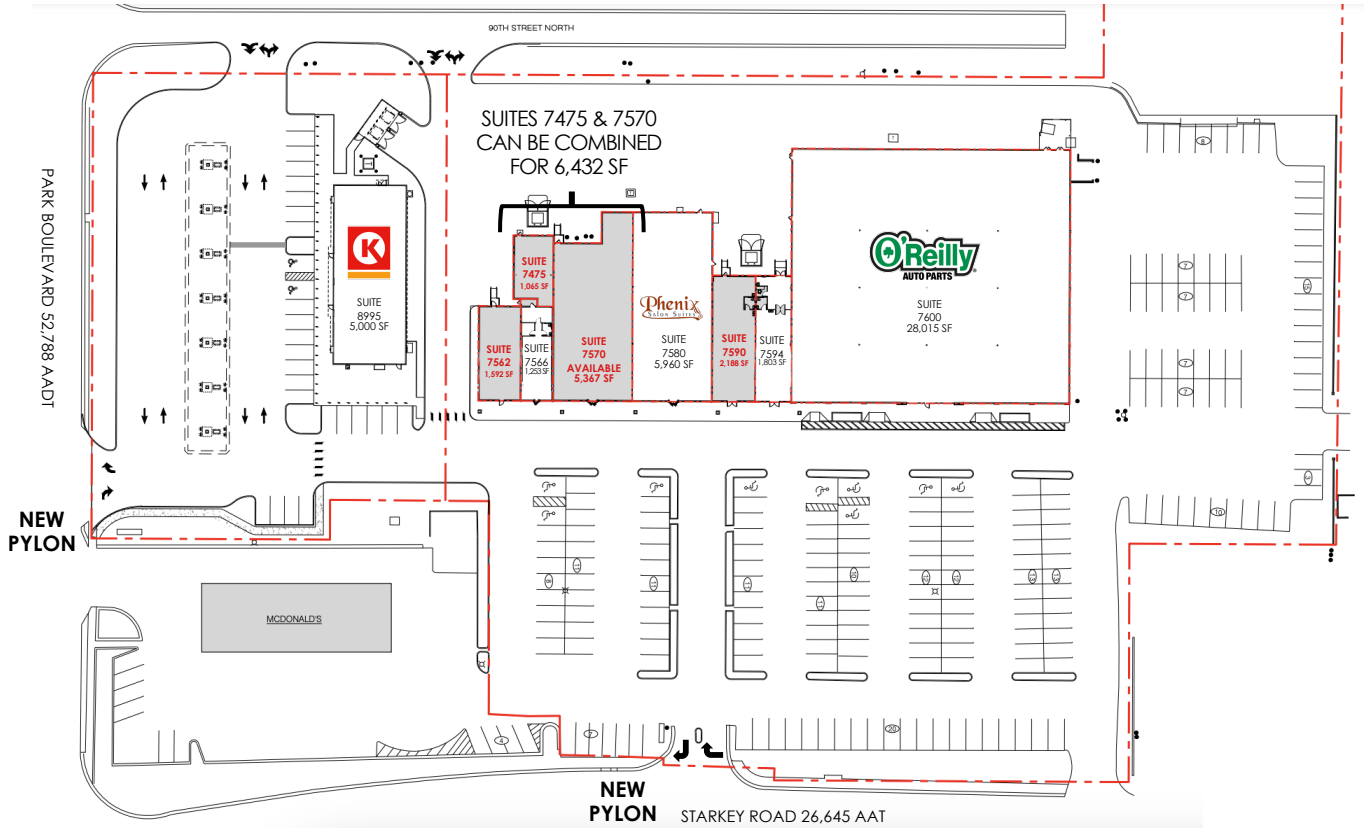
PROPERTY FEATURES

- 1,065- 6,432 SF AVAILABLE
- CENTER UNDER REDEVELOPMENT- SPRING 2025 COMPLETION, CIRCLE K OPENING FALL 2025
- SITUATED ON A BUSY SIGNALIZED CORNER WITH 80,000 CARS PASSING DAILY (PARK BOULEVARD 52,788 AADT AND STARKEY ROAD 26,645 AADT)
- HIGHLY VISIBLE PYLON SIGNAGE ON STARKEY RD AND ON PARK BLVD
- LOCATED ON A BUSY THOROUGHFARE CONNECTING I-275 TO THE GULF COAST BEACHES
- DENSELY POPULATED AREA WITH 251,237 RESIDENTS WITHIN 5 MILES

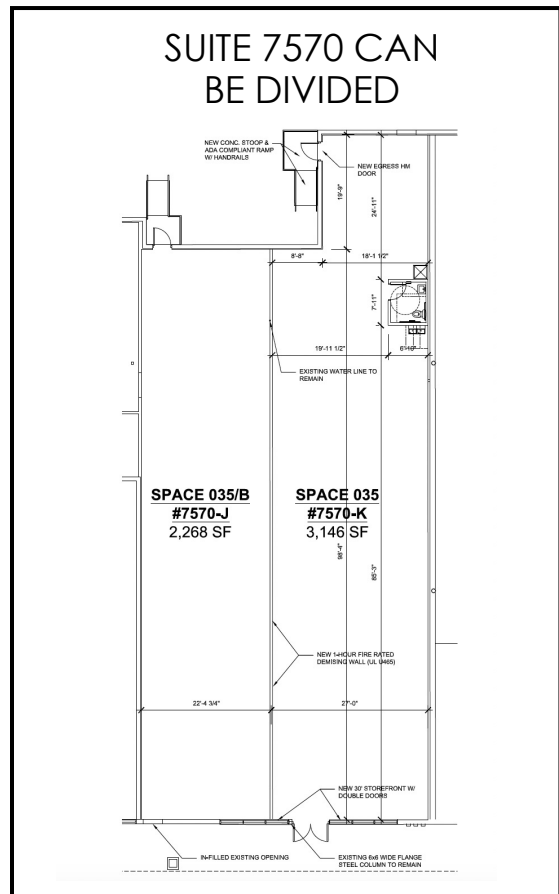


SANDI BARGFREDE
MANAGING PARTNER
(C) 407.491.8149
sandi@acrefl.com

SITE PLAN



SUITE	TENANT	SQ. FT
8995	CIRCLE K	5,000
7562	AVAILABLE	1,592
7475	AVAILABLE	1,065
7566	HOT NAILS	1,253
7570	AVAILABLE	5,367
7580	PHENIX SALON SUITES	5,960
7590	AVAILABLE	2,188
7594	BRIDGES MEDICAL	1,803
7600	O'REILLY AUTO PARTS	28,015



RETAIL MAP/ DEMOS



2024 DEMOGRAPHICS

POPULATION



1 MI- 10,412
 3 MI- 91,707
 5 MI- 251,237
 10 MIN DRIVE-
 676,095

MEDIAN HH INCOME



1 MI- \$90,715
 3 MI- \$72,928
 5 MI- \$73,985
 10 MIN DRIVE-
 \$76,024

DAYTIME POPULATION



1 MI- 2,156
 3 MI- 47,131
 5 MI- 119,307
 10 MIN DRIVE-
 373,349

MEDIAN AGE



1 MI- 47.3
 3 MI- 50.1
 5 MI- 49.0
 10 MIN DRIVE-
 46.7



PLYON RETAIL SIGNAGE

